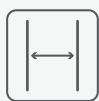


Enhanced Grain SB

Product specification guide



Square-edge profile



Smaller width



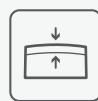
Versatile design



Hand moulded & coloured



Natural wood look



Integrated Lastane layer



'Lost-head' fixings



High slip-resistance

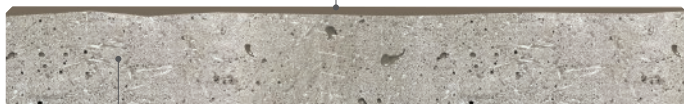


Recycled materials

Enhanced Grain SB Board Details

Surface Composition:

Resilient Lastane® layer chemically melded to the core, with a UV stable 2K coating.



Core Composition:

Blend of natural minerals bonded in a polymer resin, with long fibre reinforcement.

Weight:

8.5kg per board

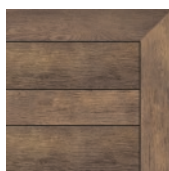
Coverage:

2.14 boards per m²

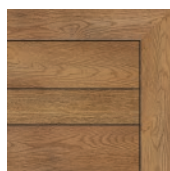
Dimensions:

126mm (W) x 3600mm (L) x 32mm (D)

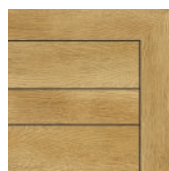
Available colours:



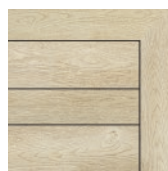
Antique Oak
MDE126A



Coppered Oak
MDE126C



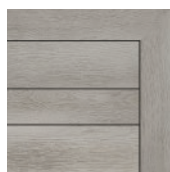
Golden Oak
MDE126G



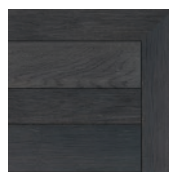
Limed Oak
MDE126L



Brushed Basalt
MDE126B



Smoked Oak
MDE126D



Burnt Cedar
MDE126R

Working Specification

For all applications we recommend a 4mm space between the sides of boards (or 6mm if using the DuoFix side-fixing guide) and 1mm gap at the ends on butt joints. A 10mm gap should be left between the boards and any abutting vertical surface to facilitate drainage.

The maximum unsupported overhang for the boards is 50mm and each cut board must be supported by a minimum of three joists. Where a board crosses a joist, two Durafix fixings will be needed. At the end of the boards, we'd recommend three Durafix fixings

Residential applications

2.5kN/m² uniform distribution load

Joists must support boards at 400mm centres if boards are at 90° to joists, if boards are at 45° then joists needs to be set at 300mm centres

Commercial applications

5kN/m² uniform distribution load

Joists must support boards at 300mm centres if boards are at 90° to joists, if boards are at 45° then joists need to be set at 240mm centres.

Enhanced Grain SB Accessories



Durafix fixings

Material: A2 Stainless Steel
Size: 4.5 x 35mm
Pack Quantity: 100
Code: FT35P100
Use: Fastening Fascia boards

Size: 4.5 x 45mm
Pack Quantity: 250
Code: FT45P250
Use: Fastening decking onto Plas-Pro or DuoSpan

Size: 4.5 x 60mm
Pack Quantity: 250
Code: FT60P250
Use: Fastening decking onto timber



Fascia board

Width: 146mm
Length: 3600mm
Depth: 16mm
Weight: 6.4kg
Coverage: 1.85 boards per m²

Construction: Polymer resin core/
Elastomer surface layer

Antique Oak: MFN360A
Brushed Basalt: MFN360B
Burnt Cedar: MFN360R
Coppered Oak: MFN360C
Smoked Oak: MFN360D
Golden Oak: MFN360G
Limed Oak: MFN360L



Enhanced Grain decking board

Width: 176mm
Length: 3600mm
Depth: 32mm
Weight: 11.8kg
Coverage: 1.54 boards per m²

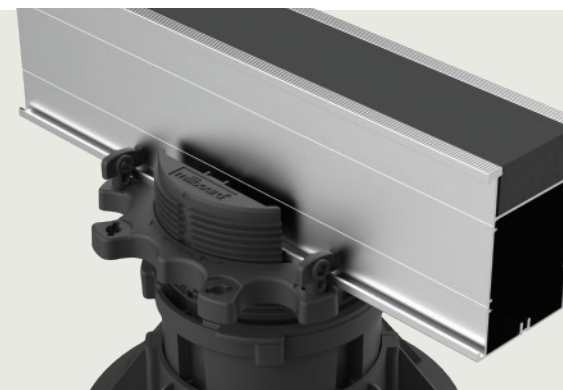
Construction: Polymer resin core/
Elastomer surface layer

Antique Oak: MDE176A
Brushed Basalt: MDE176B
Burnt Cedar: MDE176R
Coppered Oak: MDE176C
Smoked Oak: MDE176D
Golden Oak: MDE176G
Limed Oak: MDE176L

Subframes & fixings

To view the complete range of Enhanced Grain products available please visit our website:
millboard.co.uk/decking/enhanced-grain-sb

[View Accessories](#)



The information in this document was correct at the time of going to print, due to our culture of continuous improvement we reserve the right to change the information at any time without prior notice should further tests reveal different results.

The Millboard Company Ltd

UK Head Office, Castle Court, Bodmin Road, Coventry CV2 5DB

T: +44 (0)24 7643 9943 E: enquiries@millboard.co.uk

Company registered No. 06061318 VAT No. 980 616602 Edition: 2023 v1.2

